

Alibaba Cloud Cloud Monitor

Product Introduction

Issue: 20181220

Legal disclaimer

Alibaba Cloud reminds you to carefully read and fully understand the terms and conditions of this legal disclaimer before you read or use this document. If you have read or used this document, it shall be deemed as your total acceptance of this legal disclaimer.

1. You shall download and obtain this document from the Alibaba Cloud website or other Alibaba Cloud-authorized channels, and use this document for your own legal business activities only. The content of this document is considered confidential information of Alibaba Cloud. You shall strictly abide by the confidentiality obligations. No part of this document shall be disclosed or provided to any third party for use without the prior written consent of Alibaba Cloud.
2. No part of this document shall be excerpted, translated, reproduced, transmitted, or disseminated by any organization, company, or individual in any form or by any means without the prior written consent of Alibaba Cloud.
3. The content of this document may be changed due to product version upgrades, adjustments, or other reasons. Alibaba Cloud reserves the right to modify the content of this document without notice and the updated versions of this document will be occasionally released through Alibaba Cloud-authorized channels. You shall pay attention to the version changes of this document as they occur and download and obtain the most up-to-date version of this document from Alibaba Cloud-authorized channels.
4. This document serves only as a reference guide for your use of Alibaba Cloud products and services. Alibaba Cloud provides the document in the context that Alibaba Cloud products and services are provided on an "as is", "with all faults" and "as available" basis. Alibaba Cloud makes every effort to provide relevant operational guidance based on existing technologies. However, Alibaba Cloud hereby makes a clear statement that it in no way guarantees the accuracy, integrity, applicability, and reliability of the content of this document, either explicitly or implicitly. Alibaba Cloud shall not bear any liability for any errors or financial losses incurred by any organizations, companies, or individuals arising from their download, use, or trust in this document. Alibaba Cloud shall not, under any circumstances, bear responsibility for any indirect, consequential, exemplary, incidental, special, or punitive damages, including lost profits arising from the use or trust in this document, even if Alibaba Cloud has been notified of the possibility of such a loss.
5. By law, all the content of the Alibaba Cloud website, including but not limited to works, products, images, archives, information, materials, website architecture, website graphic layout, and webpage design, are intellectual property of Alibaba Cloud and/or its affiliates. This intellectual property includes, but is not limited to, trademark rights, patent rights, copyrights, and trade

secrets. No part of the Alibaba Cloud website, product programs, or content shall be used, modified, reproduced, publicly transmitted, changed, disseminated, distributed, or published without the prior written consent of Alibaba Cloud and/or its affiliates. The names owned by Alibaba Cloud shall not be used, published, or reproduced for marketing, advertising, promotion, or other purposes without the prior written consent of Alibaba Cloud. The names owned by Alibaba Cloud include, but are not limited to, "Alibaba Cloud", "Aliyun", "HiChina", and other brands of Alibaba Cloud and/or its affiliates, which appear separately or in combination, as well as the auxiliary signs and patterns of the preceding brands, or anything similar to the company names, trade names, trademarks, product or service names, domain names, patterns, logos, marks, signs, or special descriptions that third parties identify as Alibaba Cloud and/or its affiliates).

6. Please contact Alibaba Cloud directly if you discover any errors in this document.

Generic conventions

Table -1: Style conventions

Style	Description	Example
	This warning information indicates a situation that will cause major system changes, faults, physical injuries, and other adverse results.	 Danger: Resetting will result in the loss of user configuration data.
	This warning information indicates a situation that may cause major system changes, faults, physical injuries, and other adverse results.	 Warning: Restarting will cause business interruption. About 10 minutes are required to restore business.
	This indicates warning information, supplementary instructions, and other content that the user must understand.	 Note: Take the necessary precautions to save exported data containing sensitive information.
	This indicates supplemental instructions, best practices, tips, and other content that is good to know for the user.	 Note: You can use Ctrl + A to select all files.
>	Multi-level menu cascade.	Settings > Network > Set network type
Bold	It is used for buttons, menus, page names, and other UI elements.	Click OK .
Courier font	It is used for commands.	Run the <code>cd /d C:/windows</code> command to enter the Windows system folder.
<i>Italics</i>	It is used for parameters and variables.	<code>bae log list --instanceid Instance_ID</code>
[] or [a b]	It indicates that it is a optional value, and only one item can be selected.	<code>ipconfig [-all -t]</code>
{ } or {a b}	It indicates that it is a required value, and only one item can be selected.	<code>swich {stand / slave}</code>

Contents

Legal disclaimer.....	I
Generic conventions.....	I
1 What is CloudMonitor.....	1
2 Scenarios.....	2
3 Function overview.....	3

1 What is CloudMonitor

Alibaba Cloud CloudMonitor is a one-stop monitoring solution that provides monitoring for IT facilities and network quality, and service monitoring based on events, custom metrics, and logs. You can quickly build an efficient monitoring and alarm management system that supports dozens of cloud products and manages tens of thousands of instances with the help of alarm templates and cross-product and cross-regional application group tools. With CloudMonitor, you can also build a custom service dashboard that can help you quickly gain an overview of the availability of your services and reduce overall O&M costs.

2 Scenarios

CloudMonitor can apply to a wide range of services and event monitoring scenarios.

Cloud service monitoring

After activating your Alibaba Cloud account, you can use CloudMonitor to view the running status and metrics of your cloud services and set alarm rules for the metrics.

System monitoring

By monitoring the basic metrics of your ECS services (such as CPU usage, memory usage, bandwidth, and so on), you can ensure the normal running of instances to avoid service malfunction due to resource overuse.

Rapid exception handling

CloudMonitor sends alarm notifications according to the metric thresholds you set in alarm rules so that you can quickly handle exceptions.

Rapid scale-out

After setting alarm rules for metrics such as bandwidth, connection count, and disk usage, you can easily learn about the real-time status of cloud services and scale them based on your service volume requirements.

Site monitoring

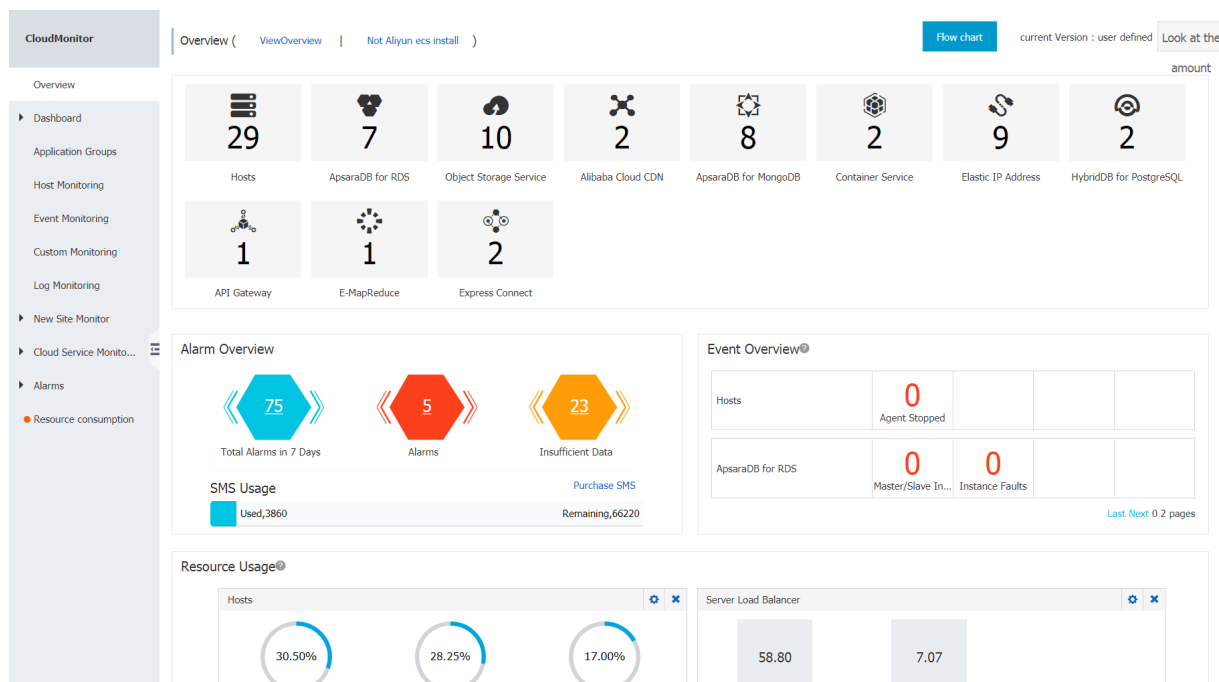
CloudMonitor supports eight protocols (namely HTTP (HTTPS), ICMP, TCP, UDP, DNS, POP3, SMTP, and FTP), which can be used to detect the availability, response time, and packet loss rate of your site, allowing you can gain insight into site availability and quickly fix any exceptions that occur.

Custom monitoring

CloudMonitor supports the creation of custom metrics which allow you to target specific monitoring requirements. After these new metrics are reported and monitored, exceptions based on these metrics will be quickly reported as alarm notifications.

3 Function overview

CloudMonitor provides you with an overview of your cloud services, cloud resource usage, alarms, and important events, allowing you to understand the utilization and maintenance of your resources and the alarms for your cloud services in real time.



Cloud service overview

The cloud service overview provides a summary of the resources that you use, helping you quickly and easily understand the assets you have. The cloud service overview displays the following services:

- Hosts, including ECS hosts and the non-ECS hosts that are installed with the CloudMonitor agent
- Server Load Balancer
- Elastic IP Address
- ApsaraDB for RDS, MongoDB, Memcache, and Redis
- OSS
- CDN
- Message Service
- Container Service
- Log Service
- StreamCompute

- Analytic DB
- API Gateway
- E-MapReduce
- HybridDB for MySQL
- HybridDB for PostgreSQL
- Express Connect

By clicking the number of resources, you can view the list page for the corresponding services under cloud service monitoring.

**Note:**

To monitor and view ECS data (such as CPU, memory, and disk usage), you need to install the CloudMonitor agent. For more information about how to install the CloudMonitor agent, see [Install CloudMonitor agent](#).

Alarm overview

The alarm overview provides alarm statistics, including the total number of alarms for the past seven days, the number of currently triggered alarm rules, the number of alarm rules with insufficient data, and the alarm SMS usage for the current month.

You can view more information by clicking the number of alarms or alarm rules.

Event overview

Event overview summarizes all the exceptions and O&M events that occur during a span of 24 hours. The following are important events that are supported.

Product	Event
Host	Agent stops working.
ApsaraDB for RDS	Master/Backup switchover
ApsaraDB for RDS	Instance failure
ApsaraDB for MongoDB	Instance failure
ApsaraDB for Redis	Master/Backup switchover
ApsaraDB for Redis	Instance failure

Resource usage overview

Resource usage shows the overall resource usage of each service under your account. The cumulative usage in the current month is monitored and measured for OSS, CDN, and Log Service. The metrics for all other services are monitored in real time by using the 95th percentile method. For example, if the 95th percentile for the CPU usage of ECS instances is 34%, 95% of the ECS instances have a CPU usage of less than 34%. The value that is determined by this method varies by product.

Resource indicator descriptions

Product	Indicator	Statistical method	Statistical period	Statistical range
Host	CPU usage	95th percentile	Real-time	All instances
Host	Memory usage	95th percentile	Real-time	All instances
Host	Disk usage	95th percentile	Real-time	All instances
Host	Outbound Internet bandwidth	95th percentile	Real-time	All instances
ApsaraDB for RDS	CPU usage	95th percentile	Real-time	All instances
ApsaraDB for RDS	IOPS usage	95th percentile	Real-time	All instances
ApsaraDB for RDS	Connection usage	95th percentile	Real-time	All instances
ApsaraDB for RDS	Disk usage	95th percentile	Real-time	All instances
OSS	Total outbound Internet traffic this month	Sum	The cumulative value from 00:00 on the first day of the month to the current time	All buckets
OSS	Total number of PUT requests this month	Sum	The cumulative value from 00:00 on the first day of the month to the current time	All buckets

Product	Indicator	Statistical method	Statistical period	Statistical range
OSS	Total number of GET requests this month	Sum	The cumulative value from 00:00 on the first day of the month to the current time	All buckets
OSS	Storage size	Sum	The sum of the storage currently occupied by all OSS buckets	All buckets
CDN	Total traffic for current month	Sum	The cumulative value from 00:00 on the first day of the month to the current time	All domain names
CDN	Peak network bandwidth	95th percentile	Real-time	All domain names
CDN	Access QPS	95th percentile	Real-time	All domain names
ApsaraDB for MongoDB	CPU usage	95th percentile	Real-time	All instances
ApsaraDB for MongoDB	Memory usage	95th percentile	Real-time	All instances
ApsaraDB for MongoDB	IOPS usage	95th percentile	Real-time	All instances
ApsaraDB for MongoDB	Connection usage	95th percentile	Real-time	All instances
ApsaraDB for MongoDB	Disk usage	95th percentile	Real-time	All instances
ApsaraDB for Memcache	Cache hit ratio	95th percentile	Real-time	All instances
ApsaraDB for Memcache	Cache usage	95th percentile	Real-time	All instances
ApsaraDB for Redis	Memory usage	95th percentile	Real-time	All instances
ApsaraDB for Redis	IOPS usage	95th percentile	Real-time	All instances

Product	Indicator	Statistical method	Statistical period	Statistical range
ApsaraDB for Redis	Connection usage	95th percentile	Real-time	All instances
EIP	Inbound network bandwidth	95th percentile	Real-time	All instances
EIP	Outbound network bandwidth	95th percentile	Real-time	All instances
Container Service	CPU usage	95th percentile	Real-time	All instances
Container Service	Memory usage	95th percentile	Real-time	All instances
Container Service	Outbound Internet traffic	95th percentile	Real-time	All instances
Log Service	Total inbound network traffic for current month	Sum	The cumulative value from 00:00 on the first day of the month to the current time	All Projects
Log Service	Total outbound network traffic for current month	Sum	The cumulative value from 00:00 on the first day of the month to the current time	All Projects
Log Service	Total requests for current month	Sum	The cumulative value from 00:00 on the first day of the month to the current time	All Projects
ApsaraDB for HybridDB	CPU usage	95th percentile	Real-time	All instances
ApsaraDB for HybridDB	Memory usage	95th percentile	Real-time	All instances
ApsaraDB for HybridDB	IOPS usage	95th percentile	Real-time	All instances
ApsaraDB for HybridDB	Connection usage	95th percentile	Real-time	All instances

Product	Indicator	Statistical method	Statistical period	Statistical range
ApsaraDB for HybridDB	Disk usage	95th percentile	Real-time	All instances