

Alibaba Cloud MaxCompute

Prepare

Issue: 20181129

Legal disclaimer

Alibaba Cloud reminds you to carefully read and fully understand the terms and conditions of this legal disclaimer before you read or use this document. If you have read or used this document, it shall be deemed as your total acceptance of this legal disclaimer.

1. You shall download and obtain this document from the Alibaba Cloud website or other Alibaba Cloud-authorized channels, and use this document for your own legal business activities only. The content of this document is considered confidential information of Alibaba Cloud. You shall strictly abide by the confidentiality obligations. No part of this document shall be disclosed or provided to any third party for use without the prior written consent of Alibaba Cloud.
2. No part of this document shall be excerpted, translated, reproduced, transmitted, or disseminated by any organization, company, or individual in any form or by any means without the prior written consent of Alibaba Cloud.
3. The content of this document may be changed due to product version upgrades, adjustments, or other reasons. Alibaba Cloud reserves the right to modify the content of this document without notice and the updated versions of this document will be occasionally released through Alibaba Cloud-authorized channels. You shall pay attention to the version changes of this document as they occur and download and obtain the most up-to-date version of this document from Alibaba Cloud-authorized channels.
4. This document serves only as a reference guide for your use of Alibaba Cloud products and services. Alibaba Cloud provides the document in the context that Alibaba Cloud products and services are provided on an "as is", "with all faults" and "as available" basis. Alibaba Cloud makes every effort to provide relevant operational guidance based on existing technologies. However, Alibaba Cloud hereby makes a clear statement that it in no way guarantees the accuracy, integrity, applicability, and reliability of the content of this document, either explicitly or implicitly. Alibaba Cloud shall not bear any liability for any errors or financial losses incurred by any organizations, companies, or individuals arising from their download, use, or trust in this document. Alibaba Cloud shall not, under any circumstances, bear responsibility for any indirect, consequential, exemplary, incidental, special, or punitive damages, including lost profits arising from the use or trust in this document, even if Alibaba Cloud has been notified of the possibility of such a loss.
5. By law, all the content of the Alibaba Cloud website, including but not limited to works, products, images, archives, information, materials, website architecture, website graphic layout, and webpage design, are intellectual property of Alibaba Cloud and/or its affiliates. This intellectual property includes, but is not limited to, trademark rights, patent rights, copyrights, and trade

secrets. No part of the Alibaba Cloud website, product programs, or content shall be used, modified, reproduced, publicly transmitted, changed, disseminated, distributed, or published without the prior written consent of Alibaba Cloud and/or its affiliates. The names owned by Alibaba Cloud shall not be used, published, or reproduced for marketing, advertising, promotion, or other purposes without the prior written consent of Alibaba Cloud. The names owned by Alibaba Cloud include, but are not limited to, "Alibaba Cloud", "Aliyun", "HiChina", and other brands of Alibaba Cloud and/or its affiliates, which appear separately or in combination, as well as the auxiliary signs and patterns of the preceding brands, or anything similar to the company names, trade names, trademarks, product or service names, domain names, patterns, logos, marks, signs, or special descriptions that third parties identify as Alibaba Cloud and/or its affiliates).

6. Please contact Alibaba Cloud directly if you discover any errors in this document.

Generic conventions

Table -1: Style conventions

Style	Description	Example
	This warning information indicates a situation that will cause major system changes, faults, physical injuries, and other adverse results.	 Danger: Resetting will result in the loss of user configuration data.
	This warning information indicates a situation that may cause major system changes, faults, physical injuries, and other adverse results.	 Warning: Restarting will cause business interruption. About 10 minutes are required to restore business.
	This indicates warning information, supplementary instructions, and other content that the user must understand.	 Note: Take the necessary precautions to save exported data containing sensitive information.
	This indicates supplemental instructions, best practices, tips, and other content that is good to know for the user.	 Note: You can use Ctrl + A to select all files.
>	Multi-level menu cascade.	Settings > Network > Set network type
Bold	It is used for buttons, menus, page names, and other UI elements.	Click OK .
Courier font	It is used for commands.	Run the <code>cd /d C:/windows</code> command to enter the Windows system folder.
<i>Italics</i>	It is used for parameters and variables.	<code>bae log list --instanceid Instance_ID</code>
[] or [a b]	It indicates that it is a optional value, and only one item can be selected.	<code>ipconfig [-all -t]</code>
{ } or {a b}	It indicates that it is a required value, and only one item can be selected.	<code>swich {stand / slave}</code>

Contents

Legal disclaimer.....	I
Generic conventions.....	I
1 Prepare Alibaba Cloud account.....	1
2 Activate MaxCompute.....	3
3 Create a project.....	5
4 Install and configure a client.....	10
5 Users and Roles.....	12
6 Configure Endpoint.....	13

1 Prepare Alibaba Cloud account

Context

Before using the MaxCompute service, you must register an Alibaba Cloud account.

Procedure

1. Register an Alibaba Cloud account

If you have not yet registered an Alibaba Cloud account, go to the Alibaba Cloud official website and at the upper-right corner click **Free Account**.



Note:

The account type you create is an Alibaba Cloud primary account, which is the account type with highest-level permissions. We recommend you keep the access credentials of this account in a secure place. We also recommend you do not allow others to use your account, and that you periodically change your password.

2. Real name authentication

Only an Alibaba Cloud account that has been real name authenticated can purchase and use all products on Alibaba Cloud. If your account has not successfully passed real name authentication, go to the [Real name authentication](#) page to authenticate it. **To save you any trouble in the future, be sure to complete the real-name authentication.**

3. Create an AccessKey

An AccessKey is primarily used for access permission verification between various Alibaba Cloud products. It is needed to guarantee the processing of tasks in the DataWorks development kit. An AccessKey is comprised of two parts: an Access Key ID and an Access Key Secret. The specific operation is as follows:

- a) Log in to Ali cloud and click **accesskeys** under the user name in the upper-right corner to Access Key Management page.
- b) Click **Create Access Key** in the upper right corner, and click **Agree and Create** in the pop-up box. project:
- c) After the Access Key is successfully created, the system will jump to the Access Key Key administration page, you can view the status of the corresponding AK and disable it, delete it, and so on. As shown in the following figure:

Once an AccessKey is disabled, services that use that AccessKey encounter operational failures and report errors. Therefore, if you change your AccessKeys, you must update the corresponding changes for the products and services that use the disabled AccessKeys.

**Note:**

An AccessKey is critical to the security of your account. Therefore, we recommend you keep Access- Key ID and Access Key Secret's security, do not let others know, once there is a risk of leakage, please disable and update in time.

2 Activate MaxCompute

Context

[Prepare Alibaba Cloud account](#). If your account is successfully verified, follow these steps to activate the MaxCompute service.

Procedure

1. Log on to your Alibaba Cloud account on the [login page](#).
2. Go to the MaxCompute homepage and click **Buy Now**.
3. Select the billing method and click **Buy Now**.

MaxCompute (Subscription)

Subscription Pay-As-You-Go

Basic Configuration

Region	Asia Pacific SE 1 (Singapore)	Asia Pacific SE 2 (Sydney)	Asia Pacific SE 3 (Kuala Lumpur)	EU Central 1 (Frankfurt)	Hong Kong (Hongkong)	China North 2 (Beijing)
China East 1 (Hangzhou)	China East 2 (Shanghai)	China South 1 (Shenzhen)	China SW 1 (Chengdu)	US West 1 (Silicon Valley)	Asia Pacific NE 1 (Japan)	
Asia Pacific SOU 1 (Mumbai)	Asia Pacific SE 5 (Jakarta)	US East 1 (Virginia)	Middle East 1 (Dubai)	UK (London)		

Computing Unit: 10 CU
1 CU = 1 core CPU + 4 GB of memory

Download: Quantity: Based on Actual Usage
Purchase Price: 0.1166 USD/GB only for Internet charges

Storage: Quantity: Based on Actual Usage
Purchase Price: Incremental Pricing

Purchase Plan

Time: 1 month 2 months 1 year

Current Selected

Region: Asia Pacific SE 1 (Singapore)
Computing Unit: 10CU
Time: 1 month(s)
Fee: **\$220.00**
Buy Now

MaxCompute has two payment options: Subscription (CU cost) and Pay-As-You-Go. For more information, see [Charge](#).

4. Confirm your order and then click **Pay**.

Confirm Order

Confirm Order

Pay

Payment Successful

Item Information	Method of Payment	Quantity	Discount	Fee
MaxCompute (Subscription) Region: Asia Pacific SE 1 (Singapore) Computing Unit: 10CU Length of Service Time: 1 month	Subscription	1	\$0.00	\$220.00

Fee: **\$220.00**

☒ MaxCompute (Subscription) Agreement of Service

Pay

After the service is successfully activated, the following page is displayed.

Pay

Confirm order

Activated

✓ Order complete.

The service you ordered is being opened. It may take 1 to 5 minutes to complete.
Please wait for a while.

ConsolePurchase history

After activating MaxCompute, you can create a project. For more information, see [Create a project](#).

3 Create a project

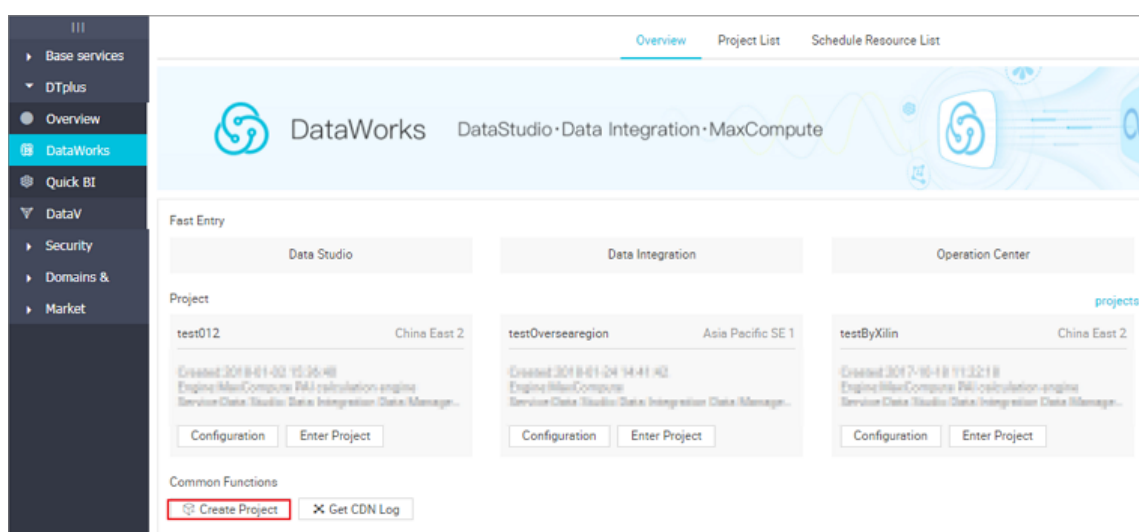
Context

A project is the basic unit of operation in MaxCompute.

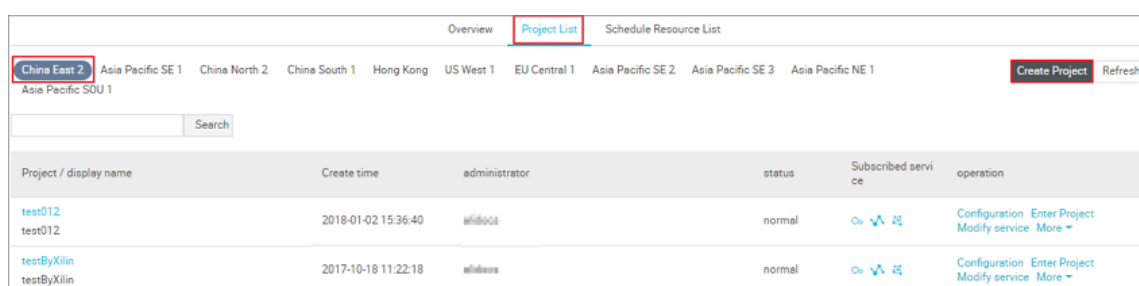
Procedure

1. Log on to the [DataWorks console](#) and create a MaxCompute project in either of the two following ways.

- On the console overview page, go to **Common Functions > Create Project**.



- On the console overview page, click **Project List**, select the region, and then click **Create Project**.



2. Configure in the **Create Project** dialog box, select region and service. If you do not buy related services for the selected region, **'Service is not available for this region'** is displayed. The data development, O&M center, and data management are selected by default. as shown in the following figure:

Create Project

Select region

China East 2

Asia Pacific SE 1

China North 2

China South 1

Hong Kong

US West 1

EU Central 1


Asia Pacific SE 2

Asia Pacific SE 3

Asia Pacific NE 1


Asia Pacific SOU 1

Choose Calculation Engine Services


☒  MaxCompute ☒ Pay-As-You-Go ☐ Subscription [Go buy](#)

After opening, you can develop ODPS SQL, ODPS MR tasks in DataWorks.

Choose DataWorks service

☐  Data Integration

After opening, you can develop data integration tasks in DataWorks and quickly implement data synchronization among more than 20 data sources.

☒  Data Development, O&M Center, Data Management

You can schedule workflows, schedule tasks, query information and permissions for all tables, and services are currently in open beta.

cancel

Next step

Select calculation engine services:

- If you want to add and authorize users using DataWorks, see [Add Users and Roles](#).

DataWorks service:

- Data integration: A data synchronization platform that provides stable, efficient, and elastically scalable services. The Data Integration is designed to implement fast and stable data movement and synchronization between multiple heterogeneous data sources in complex network environments. For more information, see [Data Integration Overview](#).

- Data development: The data development helps you to design data computing processes according to your business demands and make mutually dependent tasks be automatically run in the scheduling system. For more information, see [Data Development Overview](#).
 - O&M center: The O&M Center is a place where tasks and instances are displayed and operated. You can view all your tasks in Task List and perform such operations on the displayed tasks. For more information, see [O&M Center Overview](#).
 - Data management: The Data Management module of the Alibaba Cloud DTplus platform displays the global data view and metadata details of an organization, and enables operations such as divided permission management, data lifecycle management, and approval and management of data table/resource/function permissions. For more information, see [data management overview](#).
- 3.** Configure the basic information and advanced settings for the new project.

Create Project

* project name :

aalen

Display name :

project description :

Advanced Settings

* Enable scheduling Frequency :

on

?

* Enable Select result downloads in

on

?

this project :

for MaxCompute

MaxCompute Project Name: aalen ?

MaxCompute access identity: ☒ Personal ☐ System ?

* Quota group: Pay per view default reso... ▾

Previous

create

Basic Configuration:

- project name: The length of the project name is between 3 and 27 characters.
- display name: The length of the display name is not more than 27 characters.

Advanced Configuration:

- Enable scheduling frequency: Control the current project whether to enable or disable the scheduling system, and if it is disabled, it can not periodically schedule tasks.
- Allow editing tasks and code in this project: if the permission of the current project member to create/edit code files in this project is disabled, you cannot create/edit a new/edited code file.

- Enable select result downloads in this project: Whether data results from select statement can be downloaded in this project, and if it is disabled, it cannot download the data query results from select statement.
 - MaxCompute project name: A same project name of MaxCompute can be created in the process of creating the project.
 - Maxcompute access identity: Personal account, system account. It is recommended that corporate users with high security requirements use their personal accounts.
 - Quota group: Quota is used to implement disk quotas.
4. Click Create, the project is displayed on the **project list**.

**Note:**

- Once you become a project owner, it means that **everything** in the project is yours, and no one has permission to access your project before the authentication.
- For general users, it is not necessary to create a project. If you are added to a project, you can use the MaxCompute.

4 Install and configure a client

Once you install and configure the MaxCompute console, you can access all functions of MaxCompute through the console. For more information, see [Client](#).



Note:

- We recommend that you use the MaxCompute Studio tool. This tool integrates with the Java environment and allows MaxCompute SQL script development and execution, data management, visual log analysis, and Java (UDF, MR) development. For more information, see [What is Studio](#).
- You can also use MaxCompute through DataWorks. After creating a project in the console, you can click on **Enter Workspace** of the specified project in the project list to operate projects with MaxCompute. For more information, see [DataWorks](#).

Install the console



Note:

Make sure you have JRE 1.7 or a later version installed to properly use the MaxCompute console.

1. Download [MaxCompute console](#)(For Windows or MAC, download [MaxCompute console](#).)
2. Decompress it into a folder. After decompression, you can see four following folders:

```
bin/  conf/  lib/  plugins/
```

Configure the Console

A file called odps_config.ini is in the conf folder. Edit it by filling in corresponding information to configure the console:

```
access_id=*****
access_key=*****
#Your AccessKeyId and AccessKeySecret. You can apply for an AccessKey
through the official Alibaba Cloud console.
project_name=my_project # Specify the project you want to use.
end_point=https://service.odps.aliyun.com/api # Access URL of the
MaxCompute service.
tunnel_endpoint=https://dt.odps.aliyun.com # Access URL of the
MaxCompute Tunnel service.
log_view_host=http://logview.odps.aliyun.com
# After a user executes a task, the console returns the LogView
address of this task. You can view the detailed execution information
of this task at this address.
```



```
https_check=true # Determine whether to enable HTTPS access.
```

**Note:**

- We recommend that you configure the console according to the region you designated the MaxCompute service.
- **#** is used as a comment symbol in the `dps_config.ini` file. However, the MaxCompute console uses two minus signs `--` as a comment symbol.
- Creating a project in advance is needed so that you can specify in the configuration file. For more information, see [Project](#).
- MaxCompute provides two service addresses separately on the Internet and the intranet. Different addresses correspond to different download prices. For more information, see [Access Domains and Data Centers](#).

Run the console

After the configuration file has been modified, run MaxCompute in bin directory (For Linux, run `./bin/odpscmd`, for Windows, run `./bin/odpscmd.bat`). For example:

```
create table tbl1(id bigint);
insert overwrite table tbl1 select count(*) from tbl1;
select 'welcome to MaxCompute!' from tbl1;
```

For more information about SQL statements, see [SQL Summary](#).

5 Users and Roles

[Projects](#) are the basic unit of multi-tenant architecture, data management, computing, and are also a subject of billing in MaxCompute. Once user becomes a project owner, all objects (tables, instances, resources, UDFs) in this project belongs to the user. If project owner does not grant permissions to others, no one else has permission to access this project.



Note:

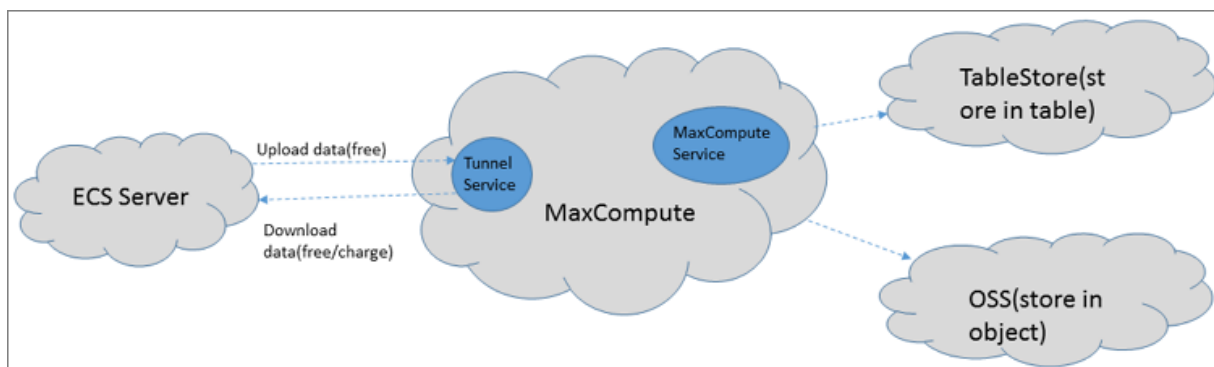
For RAM sub-accounts that already have roles in a MaxCompute or Dataworks project, revoke the sub-account role in the project and remove the sub-account in the project space before deleting the RAM sub-account. Otherwise, the sub-account will be residual in the project space, displayed as "p4_XXXXXXXXXXXXXXXXXXXX" and cannot be removed in the project space (does not affect normal function usage). Sample:

```
Residual sub-account in the project space:
odps@ MaxCompute>list users;
p4_2652900XXXXXXXXXXXX
The residual sub-account could not be deleted in space:
odps@ MaxCompute_DOC>remove user p4_2652900XXXXXXXXXXXX;
Confirm to "remove user p4_2652900XXXXXXXXXXXX
;" (yes/no)? yes
FAILED: lack of account provider
You can still see the RAM sub-account on the dataworks project member
management page at this time.
The right approach: revoke the role of the sub-account first:
odps@ MaxCompute>revoke role_project_security, role_project_admin,
role_project_dev, role_project_pe, role_project_deploy,
role_project_guest from RAM$MainCount:hanmeimei;
OK
Then remove the sub-account in project space:
odps@ MaxCompute>remove user RAM$MainCount:hanmeimei;
Then the RAM sub-account can be deleted normally.
```

- If you want to add and authorize users using DataWorks, see [Add Users and Roles](#).
- If you use the MaxCompute security management commands for [user management](#), see User Management for how to create, authorize, and delete users (including RAM sub-accounts).
- If you use the MaxCompute security management commands for role management, see [Role Management](#) for how to create, authorize, and delete roles.
- For more information about authorization and permission check, see [Authorization](#) and [Permission Check](#).

6 Configure Endpoint

This section details the regions where MaxCompute is available, and connection methods. Problems such as network connectivity and downloading charges related to use of other Alibaba Cloud products (such as ECS, TableStore, OSS, and so on) are also detailed.



MaxCompute provides two types of service connection addresses as follows:

- **The connection address of the MaxCompute service itself:** All requests except uploading and downloading data can be sent to MaxCompute, such as creating a table, deleting a function, creating a job, and so on.
- **The connection address of MaxCompute Tunnel service:** The ability to upload and download data is provided by MaxCompute Tunnel service. When you want to upload and download data through the Tunnel, you can initiate a request through the link address provided by the Tunnel.



Note:

Because the deployment and network connection status for every region are different, the billing rules for downloading data through Tunnel are also different.

Accessing method and data downloading billing rule

According to the deployment and network conditions of Alibaba Cloud regions, it mainly contains three connection methods as follows:

- Access MaxCompute Service or Tunnel Service from the Internet.
- Access MaxCompute service and Tunnel service from Alibaba Cloud classic network.
- Access MaxCompute service and Tunnel service from Alibaba Cloud VPC network.



Note:

You only need to specify a network when you want to connect to a project, not during MaxCompute project creation.

data upload

Data uploading is free-of-charge, regardless of which kind of network configuration is adopted.

Data download

According to the Tunnel service request to download data, and from which region of the ECS server, the charging rules are as follows.

- If requester and requestee are both in the same region, the tunnel download request through Alibaba Cloud classic network or VPC network is **free**. **Note that the tunnel endpoint must be configured at this time, otherwise the data is routed to the outer network for download across the region, the cost is generated.**
- If requester and requestee are not in the same region or cannot meet the same region access, then the request is a cross-region access, and data download **fees** are calculated under this condition.



Note:

Due to deployment and network conditions of cross-regional **access of Alibaba Cloud products and services**, MaxCompute cannot be **guaranteed** a permanent connection. Some fees may apply.

The connectivity configuration

MaxCompute 2.0 supports reading and writing OSS object, and also supports reading and writing tables of Table Store. For more information, see [Access OSS Unstructured Data](#) and [Access Table Store Data](#).

Configuration instructions about network connectivity are as follows:

- If MaxCompute and TableStore/OSS are in the same region, we recommend to configure the Alibaba Cloud classic network or VPC network connection method. The external network method can also be selected.
- If MaxCompute and TableStore/OSS are not in the same region, select the external network method to connect. In the case of cross-regional access, connectivity is not permanently guaranteed if you select the Alibaba Cloud classic network or VPC network method.

MaxCompute activation and service connections by region

The table as follows gives information about deployment of MaxCompute in different regions.

On the International Site, MaxCompute is currently only available in the following regions. You can apply to use MaxComputer in this region only. In this case, your data storage and computing consumption all occur in the Asia Pacific SE 1 (Singapore) region.



Note:

All endpoints support both HTTP and HTTPS. If you need to encrypt your requests, use HTTPS.

- **External MaxCompute activation and service connections by region**

Region name	City	Service status	Internet endpoint	Internet tunnel endpoint
Asia Pacific SE 1	Singapore	In service	http://service.ap-southeast-1.maxcompute.aliyun.com/api	http://dt.ap-southeast-1.maxcompute.aliyun.com
Asia Pacific SE 2	Australia	In service	http://service.ap-southeast-2.maxcompute.aliyun.com/api	http://dt.ap-southeast-2.maxcompute.aliyun.com
Asia Pacific SE 3	Kuala Lumpur	In service	http://service.ap-southeast-3.maxcompute.aliyun.com/api	http://dt.ap-southeast-3.maxcompute.aliyun.com
Asia Pacific SE 5	Jakarta	In service	http://service.ap-southeast-5.maxcompute.aliyun.com/api	http://dt.ap-southeast-5.maxcompute.aliyun.com
Asia Pacific NE 1	Japan	In service	http://service.ap-northeast-1.maxcompute.aliyun.com/api	http://dt.ap-northeast-1.maxcompute.aliyun.com
Central Europe 1	Frankfurt	In service	http://service.eu-central-1.maxcompute.aliyun.com/api	http://dt.eu-central-1.maxcompute.aliyun.com
West USA 1	Silicon Valley	In service	http://service.us-west-1.maxcompute.aliyun.com/api	http://dt.us-west-1.maxcompute.aliyun.com
East USA 1	Virginia	In service	http://service.us-east-1.maxcompute.aliyun.com/api	http://dt.us-east-1.maxcompute.aliyun.com

Region name	City	Service status	Internet endpoint	Internet tunnel endpoint
Asia Pacific SOU 1	Mumbai	In service	http://service.ap-south-1.maxcompute.aliyun.com/api	http://dt.ap-south-1.maxcompute.aliyun.com
Middle East 1	Dubai	In service	http://service.me-east-1.maxcompute.aliyun.com/api	http://dt.me-east-1.maxcompute.aliyun.com

- **Classic network MaxCompute activation and service connections by region**

Region name	City	Service status	Classic network endpoint	Classic network tunnel endpoint
Asia Pacific SE 1	Singapore	In service	http://service.ap-southeast-1.maxcompute.aliyun-inc.com/api	http://dt.ap-southeast-1.maxcompute.aliyun-inc.com
Asia Pacific SE 2	Australia	In service	http://service.ap-southeast-2.maxcompute.aliyun-inc.com/api	http://dt.ap-southeast-2.maxcompute.aliyun-inc.com
Asia Pacific SE 3	Kuala Lumpur	In service	http://service.ap-southeast-3.maxcompute.aliyun-inc.com/api	http://dt.ap-southeast-3.maxcompute.aliyun-inc.com
Asia Pacific SE 5	Jakarta	In service	http://service.ap-southeast-5.maxcompute.aliyun-inc.com/api	http://dt.ap-southeast-5.maxcompute.aliyun-inc.com
Asia Pacific NE 1	Japan	In service	http://service.ap-northeast-1.maxcompute.aliyun-inc.com/api	http://dt.ap-northeast-1.maxcompute.aliyun-inc.com
Central Europe 1	Frankfurt	In service	http://service.eu-central-1.maxcompute.aliyun-inc.com/api	http://dt.eu-central-1.maxcompute.aliyun-inc.com
West USA 1	Silicon Valley	In service	http://service.us-west-1.maxcompute.aliyun-inc.com/api	http://dt.us-west-1.maxcompute.aliyun-inc.com
East USA 1	Virginia	In service	http://service.us-east-1.maxcompute.aliyun-inc.com/api	http://dt.us-east-1.maxcompute.aliyun-inc.com

Region name	City	Service status	Classic network endpoint	Classic network tunnel endpoint
Asia Pacific SOU 1	Mumbai	In service	http://service.ap-south-1.maxcompute.aliyun-inc.com/api	http://dt.ap-south-1.maxcompute.aliyun-inc.com
Middle East 1	Dubai	In service	http://service.me-east-1.maxcompute.aliyun-inc.com/api	http://dt.me-east-1.maxcompute.aliyun-inc.com

- **VPC MaxCompute activation and service connections by region**

In a VPC, you can only access MaxCompute using the endpoint and tunnel endpoint below.

Endpoint

Region name	City	Service status	VPC endpoint	VPC tunnel endpoint
Asia Pacific SE 1	Singapore	In service	http://service.ap-southeast-1.maxcompute.aliyun-inc.com/api	http://dt.ap-southeast-1.maxcompute.aliyun-inc.com
Asia Pacific SE 2	Australia	In service	http://service.ap-southeast-2.maxcompute.aliyun-inc.com/api	http://dt.ap-southeast-2.maxcompute.aliyun-inc.com
Asia Pacific SE 3	Kuala Lumpur	In service	http://service.ap-southeast-3.maxcompute.aliyun-inc.com/api	http://dt.ap-southeast-3.maxcompute.aliyun-inc.com
Asia Pacific SE 5	Jakarta	In service	http://service.ap-southeast-5.maxcompute.aliyun-inc.com/api	http://dt.ap-southeast-5.maxcompute.aliyun-inc.com
Asia Pacific NE 1	Japan	In service	http://service.ap-northeast-1.maxcompute.aliyun-inc.com/api	http://dt.ap-northeast-1.maxcompute.aliyun-inc.com
Central Europe 1	Frankfurt	In service	http://service.eu-central-1.maxcompute.aliyun-inc.com/api	http://dt.eu-central-1.maxcompute.aliyun-inc.com
West USA 1	Silicon Valley	In service	http://service.us-west-1.maxcompute.aliyun-inc.com/api	http://dt.us-west-1.maxcompute.aliyun-inc.com

Region name	City	Service status	VPC endpoint	VPC tunnel endpoint
East USA 1	Virginia	In service	http://service.us-east-1.maxcompute.aliyun-inc.com/api	http://dt.us-east-1.maxcompute.aliyun-inc.com
Asia Pacific SOU 1	Mumbai	In service	http://service.ap-south-1.maxcompute.aliyun-inc.com/api	http://dt.ap-south-1.maxcompute.aliyun-inc.com
Middle East 1	Dubai	In service	http://me-east-1.maxcompute.aliyun-inc.com/api	http://dt.me-east-1.maxcompute.aliyun-inc.com

**Note:**

Scenarios that need to configure Endpoint and Tunnel Endpoint:

- MaxCompute client (console) configuration. See [Install and configure client](#).
-
- MaxCompute studio project connection configuration. See [Project space management connection](#).
- SDK connects to MaxCompute configuration. See [Java SDK](#) and [Python SDK](#) connect the MaxCompute interface configuration.
- The DataWorks data integration script pattern connects the MaxComputer data source configuration and uses the DataX open source tool to connect the MaxComputer data source. See [Export SQL operation results](#).

Access concepts

- In regions where the service is available, you can connect to the MaxCompute service through the Internet, classic network, or VPC.
- Fees will be charged for the data downloaded through the configured Internet tunnel endpoint, at a rate of 0.1166 USD/GB.