

Alibaba Cloud vpn gateway

Product Overview

Issue: 20181129

Legal disclaimer

Alibaba Cloud reminds you to carefully read and fully understand the terms and conditions of this legal disclaimer before you read or use this document. If you have read or used this document, it shall be deemed as your total acceptance of this legal disclaimer.








1. You shall download and obtain this document from the Alibaba Cloud website or other Alibaba Cloud-authorized channels, and use this document for your own legal business activities only. The content of this document is considered confidential information of Alibaba Cloud. You shall strictly abide by the confidentiality obligations. No part of this document shall be disclosed or provided to any third party for use without the prior written consent of Alibaba Cloud.
2. No part of this document shall be excerpted, translated, reproduced, transmitted, or disseminated by any organization, company, or individual in any form or by any means without the prior written consent of Alibaba Cloud.
3. The content of this document may be changed due to product version upgrades, adjustments, or other reasons. Alibaba Cloud reserves the right to modify the content of this document without notice and the updated versions of this document will be occasionally released through Alibaba Cloud-authorized channels. You shall pay attention to the version changes of this document as they occur and download and obtain the most up-to-date version of this document from Alibaba Cloud-authorized channels.
4. This document serves only as a reference guide for your use of Alibaba Cloud products and services. Alibaba Cloud provides the document in the context that Alibaba Cloud products and services are provided on an "as is", "with all faults" and "as available" basis. Alibaba Cloud makes every effort to provide relevant operational guidance based on existing technologies. However, Alibaba Cloud hereby makes a clear statement that it in no way guarantees the accuracy, integrity, applicability, and reliability of the content of this document, either explicitly or implicitly. Alibaba Cloud shall not bear any liability for any errors or financial losses incurred by any organizations, companies, or individuals arising from their download, use, or trust in this document. Alibaba Cloud shall not, under any circumstances, bear responsibility for any indirect, consequential, exemplary, incidental, special, or punitive damages, including lost profits arising from the use or trust in this document, even if Alibaba Cloud has been notified of the possibility of such a loss.
5. By law, all the content of the Alibaba Cloud website, including but not limited to works, products, images, archives, information, materials, website architecture, website graphic layout, and webpage design, are intellectual property of Alibaba Cloud and/or its affiliates. This intellectual property includes, but is not limited to, trademark rights, patent rights, copyrights, and trade

secrets. No part of the Alibaba Cloud website, product programs, or content shall be used, modified, reproduced, publicly transmitted, changed, disseminated, distributed, or published without the prior written consent of Alibaba Cloud and/or its affiliates. The names owned by Alibaba Cloud shall not be used, published, or reproduced for marketing, advertising, promotion, or other purposes without the prior written consent of Alibaba Cloud. The names owned by Alibaba Cloud include, but are not limited to, "Alibaba Cloud", "Aliyun", "HiChina", and other brands of Alibaba Cloud and/or its affiliates, which appear separately or in combination, as well as the auxiliary signs and patterns of the preceding brands, or anything similar to the company names, trade names, trademarks, product or service names, domain names, patterns, logos, marks, signs, or special descriptions that third parties identify as Alibaba Cloud and/or its affiliates).

6. Please contact Alibaba Cloud directly if you discover any errors in this document.

Generic conventions

Table -1: Style conventions

| Style | Description | Example |
|---|--|--|
|  | This warning information indicates a situation that will cause major system changes, faults, physical injuries, and other adverse results. |  Danger: Resetting will result in the loss of user configuration data. |
|  | This warning information indicates a situation that may cause major system changes, faults, physical injuries, and other adverse results. |  Warning: Restarting will cause business interruption. About 10 minutes are required to restore business. |
|  | This indicates warning information, supplementary instructions, and other content that the user must understand. |  Note: Take the necessary precautions to save exported data containing sensitive information. |
| | This indicates supplemental instructions, best practices, tips, and other content that is good to know for the user. |  Note: You can use Ctrl + A to select all files. |
| > | Multi-level menu cascade. | Settings > Network > Set network type |
| Bold | It is used for buttons, menus, page names, and other UI elements. | Click OK . |
| Courier font | It is used for commands. | Run the <code>cd /d C:/windows</code> command to enter the Windows system folder. |
| <i>Italics</i> | It is used for parameters and variables. | <code>bae log list --instanceid Instance_ID</code> |
| [] or [a b] | It indicates that it is a optional value, and only one item can be selected. | <code>ipconfig [-all -t]</code> |
| { } or {a b} | It indicates that it is a required value, and only one item can be selected. | <code>swich {stand / slave}</code> |

Contents

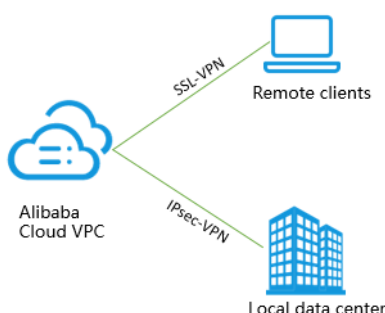
| | |
|------------------------------------|----------|
| Legal disclaimer..... | I |
| Generic conventions..... | I |
| 1 What is VPN Gateway?..... | 1 |
| 2 Scenarios..... | 3 |
| 3 Limits..... | 6 |

1 What is VPN Gateway?

VPN Gateway is an Internet-based service that securely and reliably connect enterprise data centers, enterprise office networks or Internet terminals to Alibaba Cloud VPCs through encrypted channels. VPN Gateway supports both IPsec-VPN connection and SSL-VPN connection.

**Note:**

Alibaba Cloud VPN Gateway provides services according to national policies and laws and does not provide the function of accessing the Internet.



Features

VPN Gateway provides the following features:

- IPsec-VPN

IPsec-VPN provides site-to-site VPN connection. You can use IPsec-VPN to connect a VPC to a local data center or connect two VPCs. IPsec-VPN supports IKEv1 protocol and IKEv2 protocol. Any device that supports these two protocols can connect to Alibaba Cloud VPN Gateway. Devices supporting both protocols include those from Huawei, H3C, Hillstone, Sangfor, Cisco, ASA, Juniper, SonicWall, Nokia, IBM, and Ixia.

For more information, see [Configure a site-to-site connection](#) and [Configure a VPC-to-VPC connection](#).

- SSL-VPN

You can create an SSL-VPN connection to connect a remote client to applications deployed in a VPC. When the deployment is complete, you only need to load the certificate in the client to initiate the connection.

For more information, see [Linux client remote access](#), [Windows client remote access](#), and [Mac client remote access](#).

Benefits

VPN Gateway offers the following benefits:

- High security: You can use IKE and IPsec protocols to encrypt transmitted data to ensure data security and reliability.
- High availability: Using the active/standby hot backup architecture, VPN Gateway automatically goes into the failover mode within one second. This will have minimal effect on the processing of client data.
- Low cost: The Internet-based encrypted channel is more cost-effective than the leased line so that you can rapidly build a hybrid cloud.
- Easy to use: Out-of-the-box configurations that take effect immediately allow you to rapidly complete the deployment.

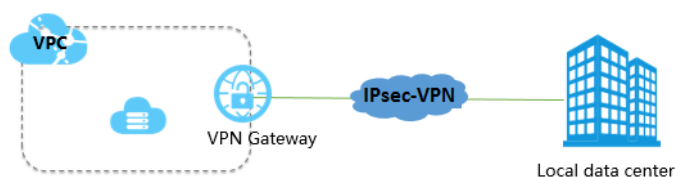
2 Scenarios

Site-to-site connections

You can build a hybrid cloud environment by creating an IPsec-VPN tunnel to connect a VPC to your local data center.

**Note:**

IPsec connections require that the IP address ranges of the local data center and the VPC do not conflict with each other. And a static, public IP is configured for the local gateway device.

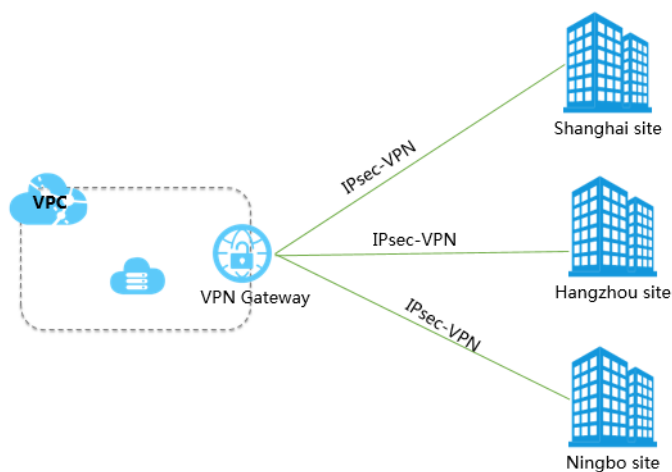


Multi-site connections

You can create multiple IPsec connections to connect multiple sites to a VPC. With the VPN-Hub function provided by VPN Gateway, each site not only communicates with the VPC, but can also communicate with each other. VPN-Hub meets the needs of large enterprises to establish an intranet communications between various sites.

**Note:**

IPsec connections require that the IP address ranges of each site cannot conflict with the IP address range of the VPC to be connected.

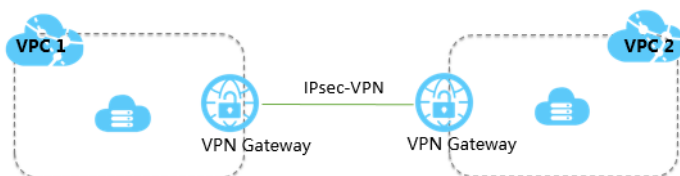


VPC-to-VPC connections

You can create a connection between two VPCs over an IPsec-VPN tunnel.

**Note:**

The IP address ranges of the VPCs cannot conflict with each other.



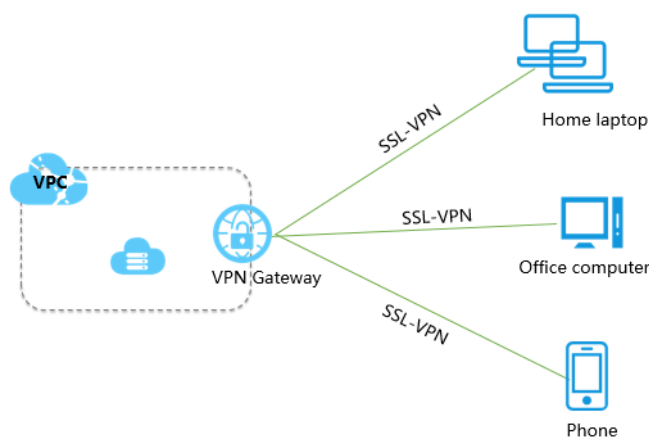
Point-to-site connections

You can connect a client to a VPC over the SSL-VPN tunnel to meet the needs of working remotely. With SSL-VPN connections, you can securely access applications deployed in a VPC wherever Internet access is available.

SSL-VPN connections support remote access from the clients of various operating systems, including Windows, Linux, Mac, IOS, and Android.

**Note:**

The IP address range of a client used to access a VPC cannot conflict with the IP address range of the VPC.

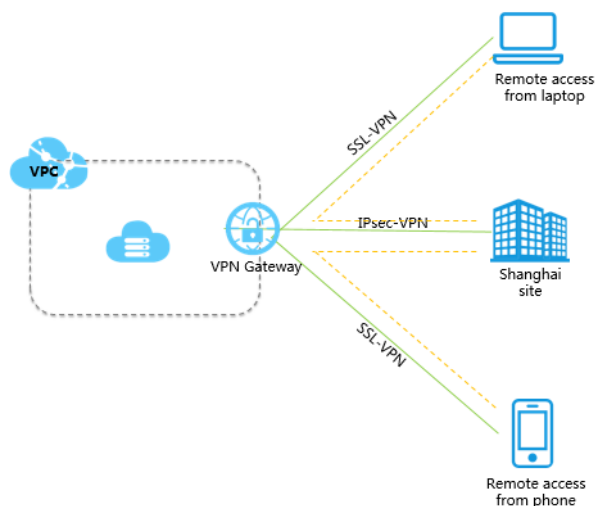


IPsec-VPN and SSL-VPN connections

You can combine the IPsec and SSL-VPN connections to expand your network topology. Once connections are established, the client can access the applications deployed in the connected VPC, and can also access the applications deployed in the connected office sites.

**Note:**

All private IP address ranges to be connected cannot conflict with one another.

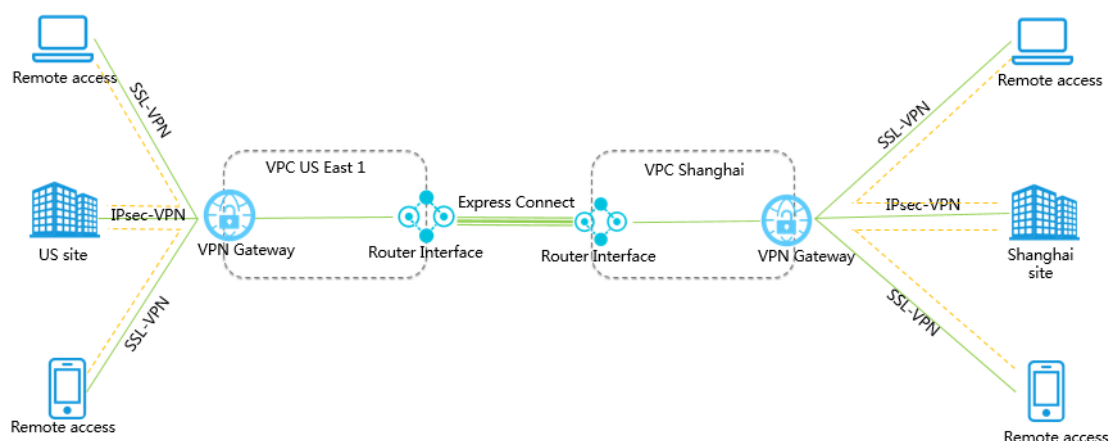


Multinational intranet connections (VPN Gateway and Express Connect)

Multinational enterprises can use Express Connect to connect two VPCs with low latency and use VPN Gateway to connect local sites at low cost to build secure and reliable intranet connections.

**Note:**

All private IP address ranges to be connected cannot conflict with one another.



3 Limits

| Resource | Default limit | Exception |
|--|--|---------------------------------------|
| VPN gateways per account | 30 | Submit a ticket to increase the quota |
| Customer gateways in a region | 30 | No |
| IPsec connections per VPN gateway | 10 | No |
| Number of SSL servers per VPN gateway | 1 | No |
| SSL server port | The following ports are not allowed: 22, 2222, 22222, 9000 , 9001, 9002, 7505, 80, 443, 53, 68, 123, 4510, 4560, 500, 4500 | No |
| Clients per SSL server | 50 | No |
| Maximum SSL client creations | 100 times | No |
| Validity period per SSL client certificate | 3 years | No |